



DDR1 (Phospho Tyr796) rabbit pAb

Catalog No	YP-Ab-13128
Isotype	IgG
Reactivity	Human;Mouse;Rat
Applications	WB; ELISA
Gene Name	DDR1 CAK EDDR1 NEP NTRK4 PTK3A RTK6 TRKE
Protein Name	DDR1 (Phospho Tyr796)
Immunogen	Synthesized peptide derived from human DDR1 (Phospho Tyr796)
Specificity	This antibody detects endogenous levels of Human,Mouse,Rat DDR1 (Phospho Tyr796)
Formulation	Liquid in PBS containing 50% glycerol, 0.5% BSA and 0.02% sodium azide.
Source	Polyclonal, Rabbit,IgG
Purification	The antibody was affinity-purified from rabbit serum by affinity-chromatography using specific immunogen.
Dilution	WB 1:1000-2000 ELISA 1:5000-20000
Concentration	1 mg/ml
Purity	≥90%
Storage Stability	-20°C/1 year
Synonyms	Epithelial discoidin domain-containing receptor 1 (Epithelial discoidin domain receptor 1;EC 2.7.10.1;CD167 antigen-like family member A;Cell adhesion kinase;Discoidin receptor tyrosine kinase;HGK2;Mammary carcinoma kinase 10;MCK-10;Protein-tyrosine kinase 3A;Protein-tyrosine kinase RTK-6;TRK E;Tyrosine kinase DDR;Tyrosine-protein kinase CAK;CD antigen CD167a)
Observed Band	100kD
Cell Pathway	[Isoform 1]: Cell membrane; Single-pass type I membrane protein.; [Isoform 2]: Cell membrane; Single-pass type I membrane protein.; [Isoform 3]: Secreted .; [Isoform 4]: Cell membrane; Single-pass type I membrane protein.
Tissue Specificity	Detected in T-47D, MDA-MB-175 and HBL-100 breast carcinoma cells, A-431 epidermoid carcinoma cells, SW48 and SNU-C2B colon carcinoma cells and Hs 294T melanoma cells (at protein level). Expressed at low levels in most adult tissues and is highest in the brain, lung, placenta and kidney. Lower levels of expression are detected in melanocytes, heart, liver, skeletal muscle and pancreas. Abundant in breast carcinoma cell lines. In the colonic mucosa, expressed in epithelia but not in the connective tissue of the lamina propria. In the thyroid gland, expressed in the epithelium of the thyroid follicles. In pancreas, expressed in the islets of Langerhans cells, but not in the surrounding epithelial cells of the exocrine pancreas. In kidney, expressed in the epithelia of the distal tubules. Not



Function

regulation of cell growth, regulation of cell-matrix adhesion, protein amino acid phosphorylation, phosphorus metabolic process, phosphate metabolic process, cell adhesion, cell surface receptor linked signal transduction, enzyme linked receptor protein signaling pathway, transmembrane receptor protein tyrosine kinase signaling pathway, sensory organ development, female pregnancy, embryo implantation, negative regulation of cell proliferation, response to organic substance, regulation of cell-substrate adhesion, phosphorylation, peptidyl-tyrosine phosphorylation, peptidyl-tyrosine modification, biological adhesion, regulation of cell adhesion, mammary gland development, regulation of growth, regulation of cell proliferation, ear development, gland development, response to protein stimulus,

Background

catalytic activity:ATP + a [protein]-L-tyrosine = ADP + a [protein]-L-tyrosine phosphate.,domain:The Gly/Pro-rich domains may be required for an unusual geometry of interaction with ligand or substrates.,function:May be involved in cell-cell interactions and recognition.,similarity:Belongs to the protein kinase superfamily. Tyr protein kinase family. Insulin receptor subfamily.,similarity:Contains 1 F5/8 type C domain.,similarity:Contains 1 protein kinase domain.,tissue specificity:Expressed at low levels in most adult tissues and is highest in the brain and lung. Abundant in breast carcinoma cell lines.,

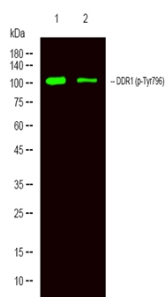
matters needing attention

Avoid repeated freezing and thawing!

Usage suggestions

This product can be used in immunological reaction related experiments. For more information, please consult technical personnel.

Products Images



Western Blot analysis of 1 Hela, 2 treated with LPS 100ng/mL 20min, using primary antibody at 1:1000 dilution. Secondary antibody(catalog#:RS23920) was diluted at 1:10000